

Rare  
Jewelry & Objets  
from the  
**ELEUTERI**  
Collection

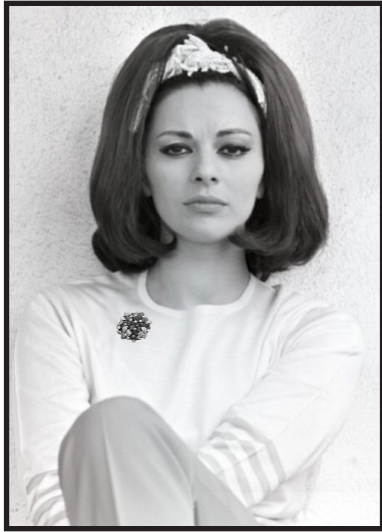
Eleuteri is recognized around the world as a leading source of and authority on rare jewelry and objets d'art.

Father and son team Carlo and Wagner Eleuteri share a discerning curatorial eye for acquiring unique and important creations.

These are some of the most memorable examples.

**ELEUTERI**

# BVLGARI



A pair of cabochon ruby and diamond double clip brooches, circa 1960s. Formerly in the collection of Italian *Dolce Vita* actress Giovanna Ralli.



Conic brooches, earrings, and rings in gold with cabochon emeralds, sapphires, rubies and diamonds, circa 1960.



Serpent necklace/belt in gold with pink and white enamel, and pear-shaped sapphires. Formerly belonging to and commissioned by Diana Vreeland, circa 1970s. Exhibited in Bulgari's international retrospective exhibitions.



# ELEUTERI



Lapis, diamond and enamel elephant necklace, circa 1970; formerly owned by an African royal family. Exhibited in Bulgari's international retrospective exhibitions.

## BVLGARI



Rare set from Bulgari's *Stars-and-Stripes* Collection, circa 1971, to celebrate the opening of their first American boutique in New York's Pierre Hotel. Yellow gold with red and blue enamel, lapis and diamonds, circa 1973. Exhibited in Bulgari's international retrospective exhibitions.



Parure of geometric design with amethysts, citrines, and diamonds, circa 1969. Exhibited in Bulgari's international retrospective exhibitions.



Bangle bracelet in 18kt yellow gold with cabochon emeralds and diamonds, circa 1970s. Ruby and diamond bangle of geometrical design, circa 1965.

## ELEUTERI

# BVLGARI



Unusual triple-strand necklace of angel skin coral beads, gathered at the sides with two gold coins, "Heraclius & Heraclius Constantinus 610-641 AD Solidus," and set with round diamonds, circa 1980. Exhibited in Bulgari's international retrospective exhibitions.



Tubogas watch bracelet with movement by Vacheron Constantin, "chicco di riso" gold work, and unusual central dial, circa 1960s.



Monete evening bag in 18kt gold, embellished with twelve ancient Roman coins and diamonds, circa 1970. Exhibited in Bulgari's international retrospective exhibitions.



Large and fine agate cameo representing the profile of George IV, King of England. Engraved by Girometti, an esteemed Italian engraver, in 1825, remounted by Bulgari in the early 1970s.

# ELEUTERI

# CARTIER



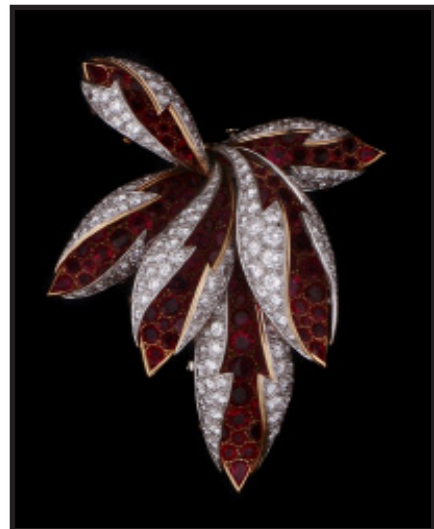
Exceptional necklace made with over 100 carats of natural Burmese rubies and diamonds, circa 1936.



Usually large and magnificent stomacher diamond bow-brooch, circa 1905.



Large platinum and diamond Art Deco bracelet, circa 1925.



Intricate leaf-shaped brooch with rubies and diamonds, circa 1960s.

# ELEUTERI

# CARTIER



Choker necklace with large carved emeralds and diamonds, circa 1950s.



Tutti Frutti brooch representing a Cardoon plant, circa 1950s.



Unusually large version of the *Everlasting Panther* brooch, circa 1960.

# ELEUTERI

# DAVID WEBB



Long chunky carved jade and gold drop necklace, circa 1970s.



Jewelry set in azurmalachite with rubies and diamonds, circa 1960s.



Tiger bracelet in gold with cabochon rubies and diamonds, circa 1970.



Cuff bracelet in platinum and carved rock crystal with pavé diamonds, circa 1975.

# ELEUTERI

# VAN CLEEF & ARPELS



**M**agnificent Persian turquoise and diamond set, circa 1980s.



**D**ahlia brooch with diamonds and rubies.



**I**conic *Ludo* bracelet in 18kt yellow gold with old mine cut diamonds and black enamel (on clasp), circa 1940s.



**B**rooch with rubies and blue and yellow sapphires, circa 1960s.

# ELEUTERI



# GERARD



Important diamond and cabochon sapphire parure, circa 1970s.



Parure in 18kt yellow gold with brilliant cut diamonds and angel skin coral. Brooch can be worn as a necklace.



Diamond and emerald necklace, circa 1980s.



Bracelet in 18kt yellow gold with brilliant cut diamonds (13.5 cts), circa 1970s. Included in *Twentieth Century Jewelry*, by Electa.

# ELEUTERI

# MAGNIFICENT JEWELS



**H**erriz Collection emerald and diamond parure, circa 1970.



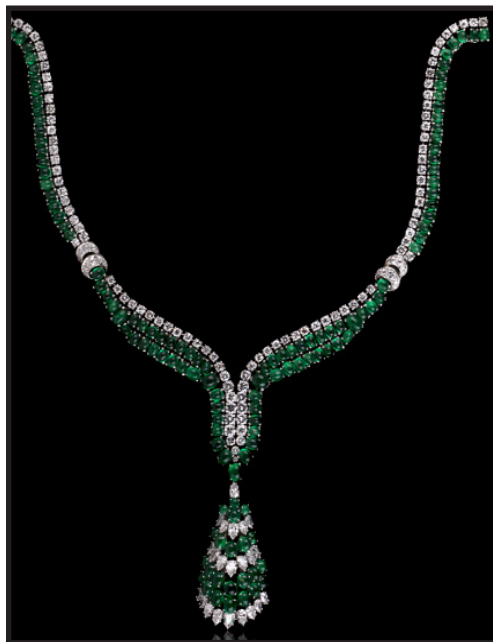
**I**mportant natural Burmese cabochon ruby and diamond bracelet, circa 1955.



**M**ulti-color necklace with diamonds and cabochon rubies, emeralds and blue sapphires, circa 1950.



**M**agnificent necklace suspending unusually shaped, hexagonal fancy honey colored diamond (17 cts).



**E**merald and diamond drop necklace, circa 1960s.



**E**xceptional three strand natural pearl necklace and earrings, circa late 19th century.

ELEUTERI

# ART DECO



**B**racelet in platinum with mixed cut diamonds (20 cts) and center Colombian emerald (4.50 cts), circa 1935. France.



**D**iamond bracelet with fine Colombian emerald (42 cts), circa 1928.



**G**eorge Fouquet bracelet with blue sapphires, jade, lapis and diamonds.

ELEUTERI

# ART DECO



Sautoir in platinum with natural pearls, diamonds and carved green tourmaline depicting the Madonna and Child, circa 1920.



Flexible platinum and diamond bracelet, circa 1920s.

ELEUTERI

# ANTIQUe



Caillot & Peck collier necklace with diamonds and natural pearls. France, circa 19th century.



Constantin Roesler Franz micromosaic necklace. Rome, circa 1850.



Snake necklace/belt in turquoise and diamonds, of Austrian origin, circa late 19th century.



Pendant of aristocratic provenance with natural Colombian emerald (87.50 cts) and old mine cut diamonds, circa early 19th century, "bitten" by Florentine pottery Medusa mask, circa 1870.

# ELEUTERI

# ANTIQUÉ



**C**astellani blackamoor brooch with impeccable gold filigree work, circa mid 19th century. Formerly part of the Fontana Collection, perhaps the greatest gathering of Castellani pieces, auctioned in 1939.



**G**own-holder, circa late 19th century. Formerly in the collection of King Farouk of Egypt.



**B**racelet in 18kt yellow gold manufactured by the historic Roman house Castellani in the early 19th century, presenting antique Roman bronze coins enclosed in an exceptional 18kt yellow gold mounting.



**I**talian carved emerald and diamond ring, circa mid 19th century.



**R**ed coral bracelet manufactured in Naples at the end of the 18th century.

# ELEUTERI

# IMPORTANT STONES



Important earrings with 200 cts of mogul emerald beads (Colombia), embellished with old mine cut diamonds (30 cts).



Bracelet in platinum with cornucopia of diamonds (app. 10 cts) and blue sapphires (app. 120 cts).



Ring with Colombian emerald (17 cts), with insignificant clarity enhancement.



Ring with natural, unheated Burmese sapphire (17 cts) and triangular cut diamonds.



Three strand emerald necklace (800 cts, African) with diamond beads and Art Deco white gold and diamond clips. Fluted shape emerald and diamond tassels bracelet, circa 1925.

ELEUTERI

# IMPORTANT STONES



Eleuteri acquired the Torlonia Emerald, a 415 carat old mine cut Colombian emerald, carved with a heart shaped motif in India in the mid-nineteenth century (and subsequently owned by an esteemed Maharajah) before passing to the Torlonia family just after WWII.



Twenty-seven barrel shaped, fluted emeralds (nearly 500 carats) - all which originally belonged to an Indian Moghul ruler, dating back to the 18th century.



Large Art Deco cabochon emerald (300 cts) and diamond bracelet.

## ELEUTERI



# CRYSTAL & SILVER



**R**ussian silver and crystal set in original box, circa 19th century.



**B**ulgari Tea for Two set, in solid 18kt gold, circa 1969.



**S**ilver tray depicting The Battle At The Milvian Bridge (Ponte Milvio), which took place on the 28th of October 312 between the Roman Emperors Constantine I and Maxentius. Made in Italy, circa 1870.



**C**artier luxurious travel set in gold and silver, circa 1940s.



Early 20th century diamond brooches assembled to form a stomacher.  
An Eleuteri invention.

ELEUTERI